

# Holly Sock

By Susan H. Esser

## Materials:

2 balls main color (deep red) sport weight yarn  
1 ball green CC1  
1 ball bright red CC2

Gauge: 5 sts = 1 inch

Needles: Size 6 (or size you need for gauge) 12-inch circular, plus double points



WAVY RIB: Multiple of 5 sts

With main color, cast on 45 stitches, join, and place a marker.

Row 1: With MC, \*K2, P3 repeat from \* around

Row 2: With CC1, \*K1, Sl 1, K1, P2, repeat from \* around

Row 3: With CC1, repeat row 1

Row 4: With CC2, repeat row 2

Row 5: With CC2, repeat row 1

Row 6: With MC, repeat row 2

Repeat rows 1 through 6 once more. Then using MC only work 4 rows stockinette stitch, decreasing 1 st, one time only (44 stitches total).

*NOTE: If you wish a longer sock, knit more than 4 rows at this point and between Charts A & B. (These charts are at the bottom of this pattern.)*

Work Chart A, which is the diamond design, a repeat of 4 stitches. The O in the center can be a bobble, a French knot placed later, or a one knitted stitch. Another choice would be to duplicate stitch this center stitch later.

Now with MC only, work 4 rows of st. st. and decrease 2 sts over these 4 rows. A total of 42 stitches.

Work Chart B, which is the holly chart, a repeat of 6 stitches. The O can be either French knots done later, or small bobbles.

Now with MC only, work 4 rows of st st and increase 2 sts over these 4 rows. A total of 44 stitches. Then work Chart A again.

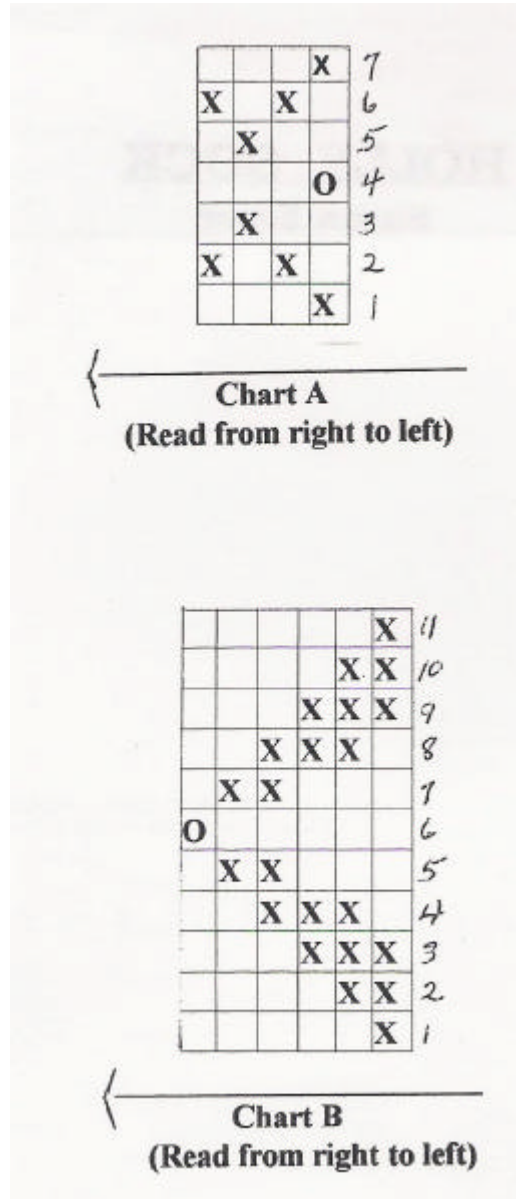
Now work 4 rows of MC again; you may stay with these 44 stitches, or increase to 48 for the heel and gusset etc.

Stay with your Main Color and work the back of heel, turning the heel, and the gussets according to the Generic Sock Pattern.

Colored Toe:

For my sample sock, I worked 20 rows st st in MC after the gussets were finished. Then following the decreasing of the toe, work the stripes in this manner using: CC1, MC, CC2, MC, CC1, MC, CC2, MC, CC1, MC, CC2, MC.

Again referring to the Generic directions, work the kitchener stitch in the MC.



Susan H. Esser  
14 Eula Street, Greenville, SC 29609  
Phone (864) 268-0159, shesser@aol.com